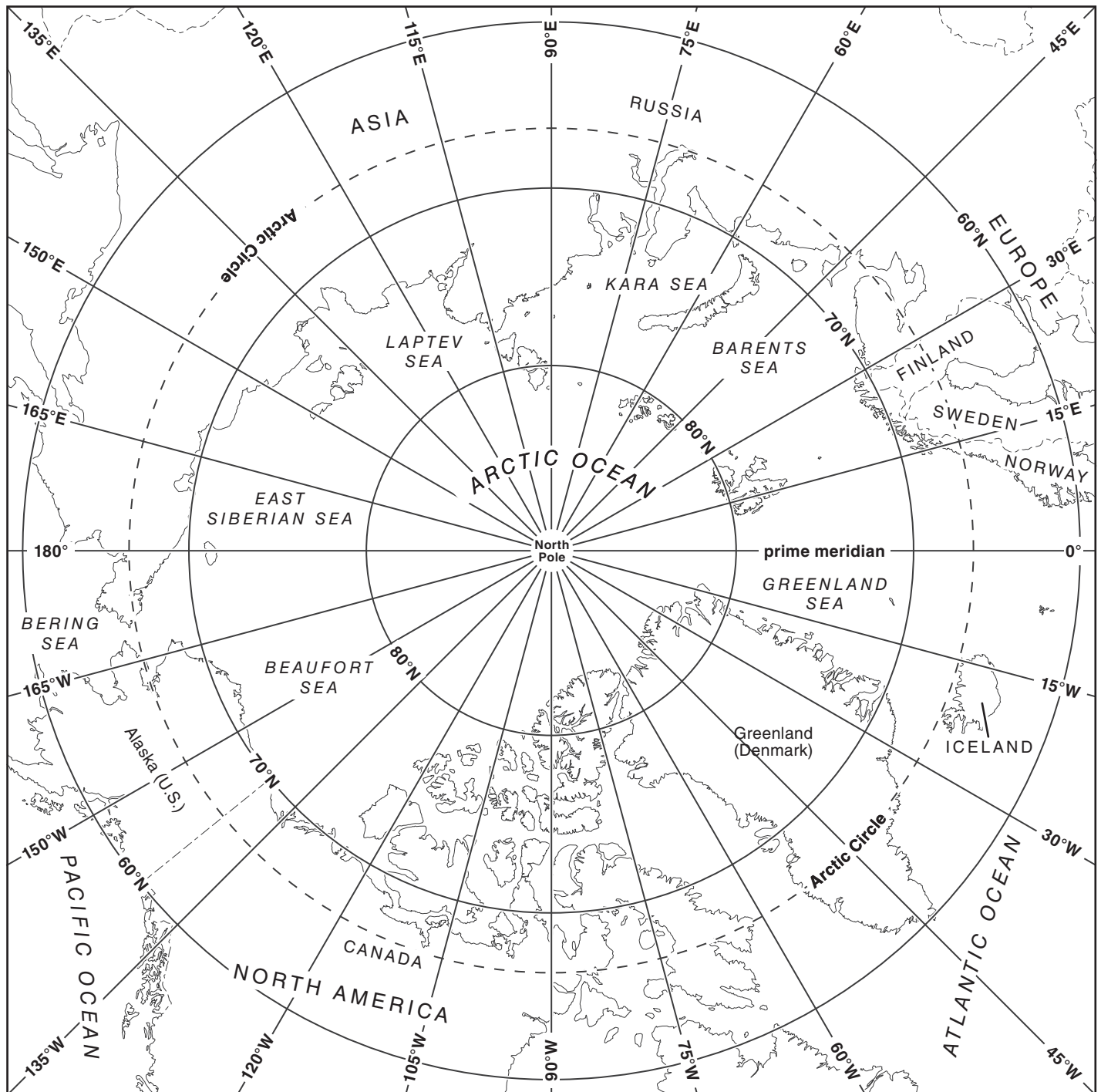


A Polar Projection: The Arctic Region



A polar projection is called an equidistant projection. Equidistant projections show land and water in relation to a central point. Equidistant projections show distance and direction accurately. Size and shape become increasingly distorted as you move away from the center.



A Polar Projection: The Arctic Region

Monday

1. What is the center on the Arctic region polar projection map?

2. On a polar projection, the latitude lines appear as _____.

Tuesday

1. Which continents are included in the Arctic region?

2. Which special line of latitude runs through northern Asia, northern Europe, and northern North America?

Wednesday

1. Name at least four labeled seas that are located within the Arctic Circle.

2. Name at least four labeled countries that are located in the Arctic region.



A Polar Projection: The Arctic Region

Thursday

1. A polar projection map is an equidistant projection. Do equidistant projections show distance and direction, or size and shape correctly?

2. Which continent is located at 30°E longitude, and which continent is located at 150°W longitude?

Friday

1. Which country includes this address: 75°N, 120°W?

2. What is the latitude of the northernmost point in the United States?

Challenge

Write two questions about the polar projection of the Arctic region on the back of the map. Be sure to include the answers. Ask a partner to solve the problems.